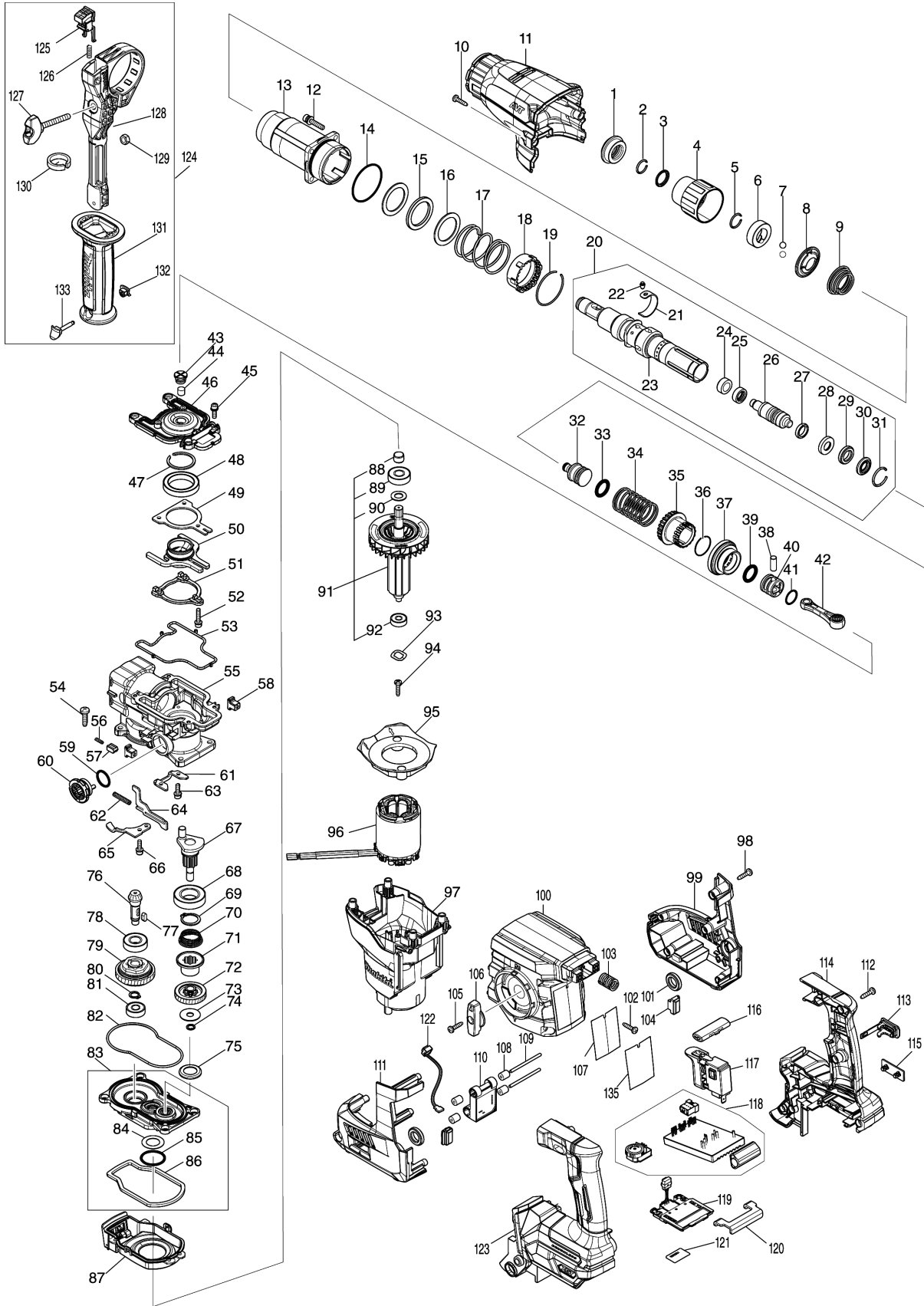


# Model No.HR008G 30MM CRDLS COMBINATION HAMMER





Model No.HR008G 30MM CRDLS COMBINATION HAMMER

Position	Artikel-Nr.	Beschreibung	I/C	Stk.	New/Old	Opt. 1	Opt. 2	Hinweis
001	286288-8	CAP 35		1				
002	233989-9	RING SPRING 14		1				
003	346834-0	WASHER 16		1				
004	459685-3	CHUCK COVER		1				
005	233992-0	RING SPRING 15		1				
006	327269-4	RING 17		1				
007	216022-2	STEEL BALL 7.0		2				
008	347944-6	GUIDE WASHER		1				
009	232503-8	CONICAL COMP. SPRING 21-34		1				
010	266326-2	TAPPING SCREW 4X18		2				
011	459167-5	BARREL COVER		1				
012	266793-1	HEX. S.H.B. M5X25 WITH WR		4				
013	140J35-0	BARREL COMPLETE		1				
C10	213636-8	OIL SEAL 25		1				
014	213620-3	O RING 46		1				
015	422493-5	RUBBER RING 31		1				
016	267354-0	FLAT WASHER 31		2				
017	232496-9	COMPRESSION SPRING 37		1				
018	419986-1	LOCK SLEEVE		1				
019	233952-2	RING SPRING 41		1				
020	136312-6	TOOL HOLDER ASS'Y		1				
D10		INC. 21-31						
021	347501-0	LEAF SPRING		1				
022	256598-7	SHOULDER PIN 4		1				
023	327277-5	TOOL HOLDER		1				
024	327515-5	SLEEVE 11		1				
025	327516-3	RING 11		1				
026	140S89-1	IMPACT BOLT A COMPLETE		1				
027	213880-7	SEAL RING 12		1				
028	327268-6	RING 11		1				
029	424267-0	CUSHION RING 12		1				
030	327271-7	WASHER 11		1				
031	231987-7	RING SPRING 21		1				
032	327266-0	STRIKER		1				
033	213881-5	O RING 16		1				
034	232497-7	COMPRESSION SPRING 27		1				
035	327276-7	DRIVING SLEEVE		1				
036	232501-2	RING SPRING 24		1				
037	226868-8	SPIRAL BEVEL GEAR 31		1				
038	268122-4	PIN 7		1				
039	213881-5	O RING 16		1				
040	319807-6	PISTON		1				

Please order the parts with part number.

Print Date 2/2/2022

Model No.HR008G 30MM CRDLS COMBINATION HAMMER

Position	Artikel-Nr.	Beschreibung	I/C	Stk.	New/Old	Opt. 1	Opt. 2	Hinweis
041	213226-7	O RING 16		1				
042	140J36-8	CONNECTING ROD COMPLETE		1				
043	459180-3	FILTER CAP		1				
044	443153-6	FELT		1				
045	922123-3	HEX. SOCKET HEAD BOLT M4X14		4				
046	319802-6	CRANK CAP		1				
047	961140-8	RETAINING RING		1				
048	211423-9	BALL BEARING 6806DDW		1				
049	347500-2	BEARING RETAINER B		1				
050	140J31-8	COUNTER WEIGHT COMPLETE		1				
051	310927-9	WEIGHT RETAINER		1				
052	266948-8	HEX S. H. BOLT M4X20 WITH WR		3				
053	459182-9	SEAL RING B		1				
054	266021-4	TAPPING SCREW 5X20		4				
055	140J33-4	CRANK HOUSING COMPLETE		1				
056	232499-3	COMPRESSION SPRING 2		1				
057	310929-5	PUSH CORN		1				
058	455165-7	FIX GUIDE		2				
059	213262-3	O RING 18		1				
060	459175-6	LINK LEVER		1				
061	347497-5	BEARING RETAINER A		1				
062	234019-9	COMPRESSION SPRING 4		1				
063	922123-3	HEX. SOCKET HEAD BOLT M4X14		2				
064	345814-3	LINK PLATE		1				
065	347498-3	GUIDE PLATE		1				
066	922123-3	HEX. SOCKET HEAD BOLT M4X14		1				
067	140M22-7	CRANK SHAFT COMPLETE		1				
068	211323-3	BALL BEARING 6904LLU		1				
069	961060-6	RETAINING RING S-20		1				
070	232498-5	CONICAL COMP. SPRING 21- 26		1				
071	327273-3	CLUTCH		1				
072	226869-6	HELICAL GEAR 31		1				
073	267353-2	FLAT WASHER 8		1				
074	961034-7	RETAINING RING		1				
075	345818-5	CUP WASHER 16		1				
076	226867-0	SPIRAL BEVEL GEAR 8		1				
077	254239-9	KEY 4		1				
078	211131-2	BALL BEARING 6001DDW		1				
079	125386-2	TORQUE LIMITER ASS'Y		1				
080	961006-2	RETAINING RING S-10		1				

Model No.HR008G 30MM CRDLS COMBINATION HAMMER

Position	Artikel-Nr.	Beschreibung	I/C	Stk.	New/Old	Opt. 1	Opt. 2	Hinweis
081	210005-4	BALL BEARING 608DDW		1				
082	459181-1	SEAL RING A		1				
083	136330-4	GEAR HOUSING ASS'Y		1				
D10		INC. 84-86						
084	253749-3	FLAT WASHER 16		1				
085	213445-5	O-RING 26		1				
086	459183-7	SPONGE SHEET		1				
087	140J32-6	AIR DUCT COMPLETE		1				
088	331775-3	SLEEVE 10		1				
089	211097-6	BALL BEARING 6000LLB		1				
090	253828-7	FLAT WASHER 10		1				
091	519722-6	ROTOR ASS'Y		1				
D10		INC. 88-90,92						
092	210022-4	BALL BEARING 626DDW		1				
093	253555-6	WAVE WASHER 12		1				
094	266326-2	TAPPING SCREW 4X18		2				
095	413F13-2	BAFFLE PLATE		1				
096	629A96-4	STATOR		1				
097	141H81-4	MOTOR HOUSING COMPLETE		1				
C10	263027-3	RUBBER PIN 4		1				
098	266326-2	TAPPING SCREW 4X18		5				
099	183V77-3	HOUSING SET		1				
D10		INC. 111						
100	413F12-4	HANDLE BASE		1				
101	459184-5	CUSHION RING 12		2				
102	266326-2	TAPPING SCREW 4X18		4				
103	232500-4	COMPRESSION SPRING 10		1				
104	422863-8	BATTERY CUSHION		2				
105	266326-2	TAPPING SCREW 4X18		1				
106	459174-8	CHANGE LEVER		1				
107	8119V9-3	HR008G NAME PLATE		1				
108	422472-3	SPONGE SLEEVE 3		4				
109	256886-2	ROD 3		2				
110	620J19-9	ACCELEROMETER CIRCUIT		1				
111	183V77-3	HOUSING SET		1				
D10		INC. 99						
112	266326-2	TAPPING SCREW 4X18		6				
113	140G30-2	CAP COMPLETE		1				
C10	213A05-9	O-RING16		1				
114	183V96-9	HANDLE SET		1				
C10	263005-3	RUBBER PIN 6		2				
C20	8005T5-8	XGT LOGO LABEL		1				

Model No.HR008G 30MM CRDLS COMBINATION HAMMER

Position	Artikel-Nr.	Beschreibung	I/C	Stk.	New/Old	Opt. 1	Opt. 2	Hinweis
D10		INC. 123						
115	459753-2	CAP		1				
116	453124-5	F/R CHANGE LEVER		1				
117	651439-6	SWITCH C3JR-4B-2		1				
118	620J18-1	CONTROLLER		1				
119	632P65-6	TERMINAL UNIT		1				
120	347885-6	SUPPORT PLATE		1				
121	8119W3-2	HR008G SERIAL NO. LABEL		1				
122	620G34-5	LED CIRCUIT		1				
123	183V96-9	HANDLE SET		1				
C10	263005-3	RUBBER PIN 6		2				
C20	8005T5-8	XGT LOGO LABEL		1				
D10		INC. 114						
124	126882-3	GRIP ASSEMBLY		1				
D10		INC. 125-133						
125	144959-2	LOCK BUTTON COMPLETE		1				
126	233360-7	COMPRESSION SPRING 4		1				
127	265625-9	THUMB SCREW M6X50		1				
128	458355-1	SIDE HANDLE BASE		1				
129	931302-2	HEX. NUT M6		1				
130	422258-5	SPONGE SHEET		1				
131	458357-7	GRIP 36		1				
132	422255-1	CAP		1				
133	161838-9	FIX PIN		1				
135	8052T1-3	CLEAR LABEL		1				
A01	331886-4	DEPTH GAUGE		1				
A02	198993-4	GREASE VESSEL SET		1				
A03	443122-7	CLOTH		1				
A04	821875-2	PLASTIC CASE		1				
C10	162271-8	LATCH		2				
A06A	8052Y6-8	HR008GZ03 PLASTIC CASE LABEL		2				
A07	***DX10	DUST COLLECTION SYSTEM SET		1				
C10	459206-1	SEALING CAP		5				
D10		COMPO-PARTS						
A10B	***DC40RA	DC40RA FAST CHARGER		1				
D10		COMPO-PARTS						
A11B	412393-7	BATTERY COVER		1				
A12B	191B26-6	BATTERY BL4040 SET		2				
B01	1910R8-2	HAMMER SERVICE KIT		1				
C10	181490-7	HAMMER GREASE 30G		2				
D10		INC. 1,2,5,7,22,26,27,29,31,						

Model No.HR008G 30MM CRDLS COMBINATION HAMMER

Position	Artikel-Nr.	Beschreibung	I/C	Stk.	New/Old	Opt. 1	Opt. 2	Hinweis
D20		INC. 33,36,39						

Please order the parts with part number.

Print Date 2/2/2022